



 **15136**

01227000507



4 Salah Eldien st. From Salah Salem Road
Second Floor - Flat 205



Sky Capital
View
— New Capital —





We aim to offer our clients the best home services and outstanding level through the selection of the best locations and the best engineering designs and precision in execution to achieve our goal which is the best home.

Better House
company for real estate development

Working in real estate development to form models for distinct housing units and sophisticated for the development of the field of real estate in Egypt our beloved country and our biggest focus in the new cities in order to make a better future away from the crowding and noise.



Sky Capital View

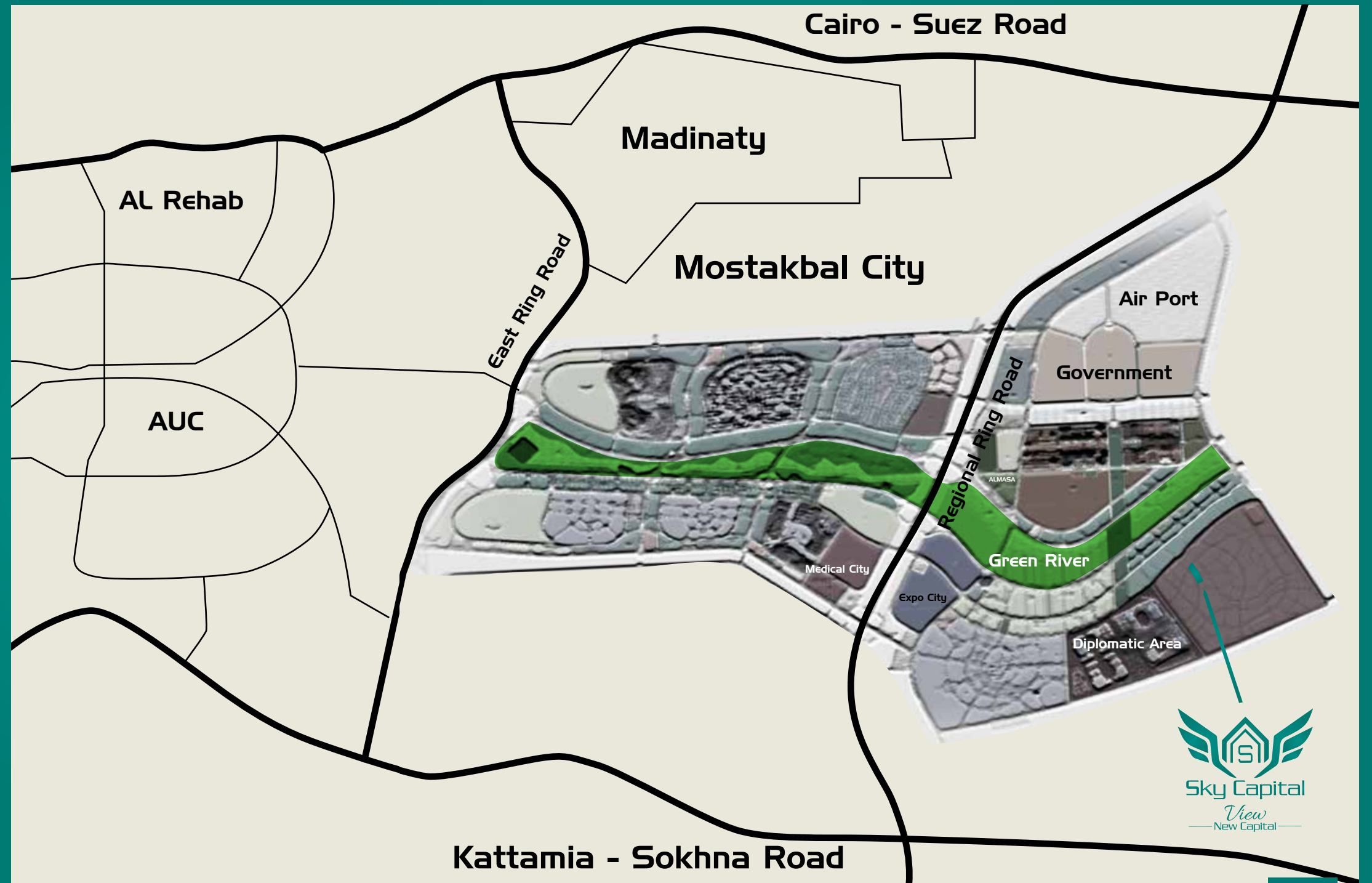
Is the latest Better House project residential apartments, duplex ,villas.
another level of luxury

The project includes many services and facilities designed in a modern way to provide a better life.

The compound is located in the best locations of the new administrative Capital (R8) next to the al Masa hotel and the government district

district of the embassies and the mosque of Al-Fattah Al-Aleem and cathedral and the logic of business and the Green River.







Sky Capital

View

— New Capital —



B21 B20 B14 B19 E18 E17 E16 E15

Service Area

C9

D11

D10

C8

B12

B13

C1

C2

C3

F4

F5

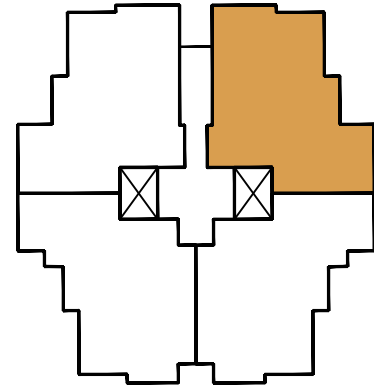
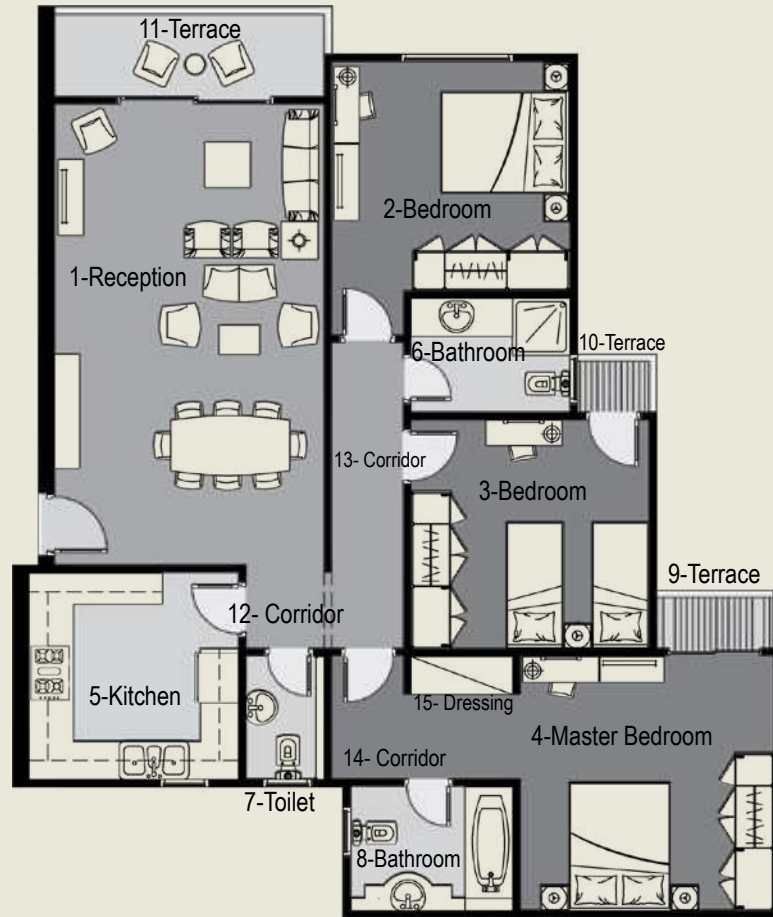
F6

F7



Sky Capital
View
New Capital

TYPICAL - TYPE C



Dimensions	
1- Reception	7.3x4.5 m
2- Bedroom	3.75x3.72 m
3- Bedroom	3.75x3.72 m
4- Master Bedroom	4.1x4.12 m
5- Kitchen	3.6x3.4 m
6- Bathroom	2.5x1.95 m
7- Toilet	1.35x2 m
8- Bathroom	2.5x2.1 m
9- Terrace	1.32x0.95 m
10- Terrace	0.95x0.95 m
11-Terrace	3.25x1.35 m
12- Corridor	1.45x1.35 m
13- Corridor	1.13x5.2 m
14- Corridor	3.1x2.1 m
15- Dressing	1.6x0.75 m

170 M²

170 M²

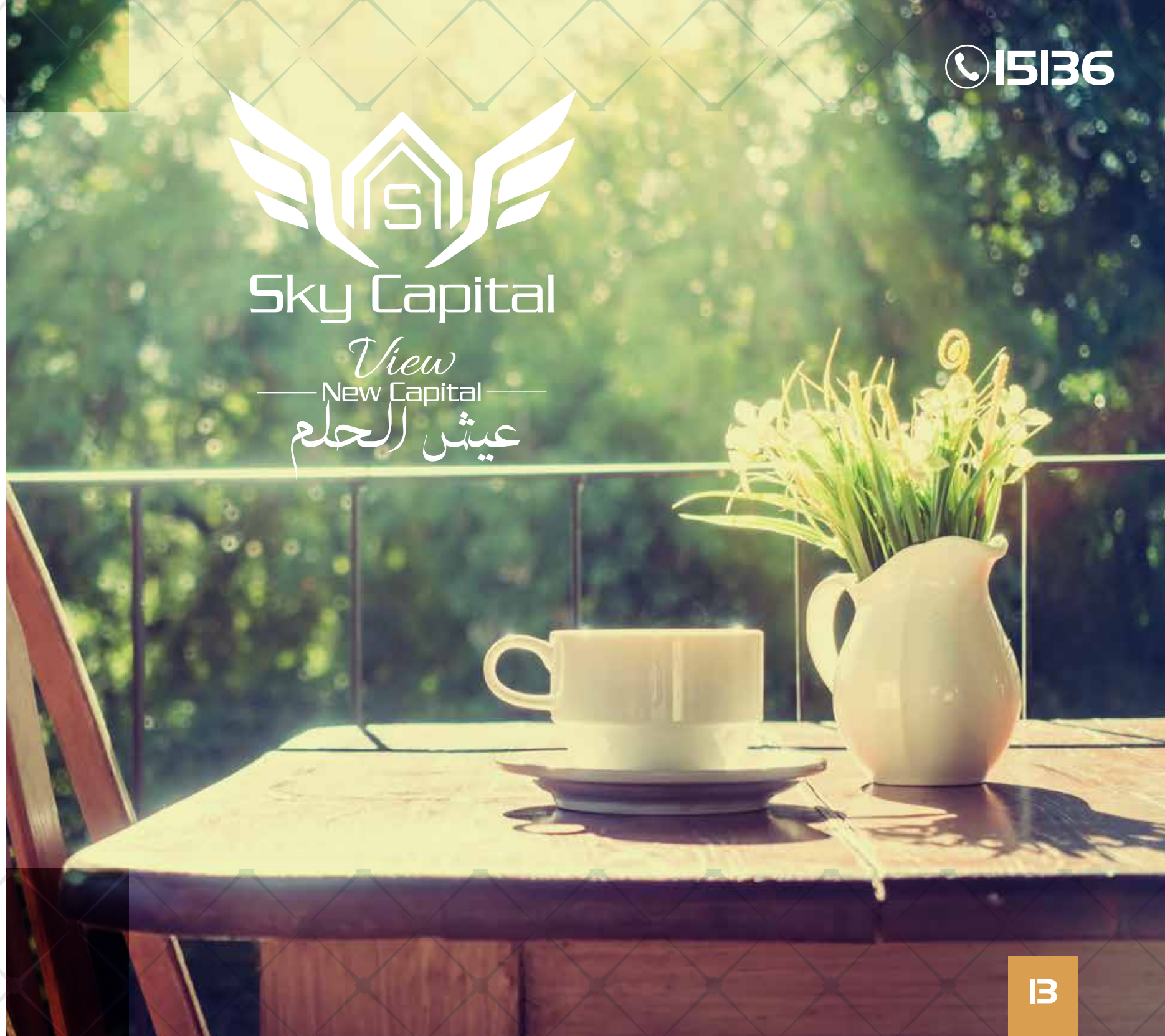


Sky Capital

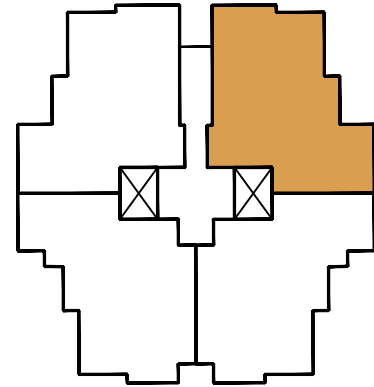
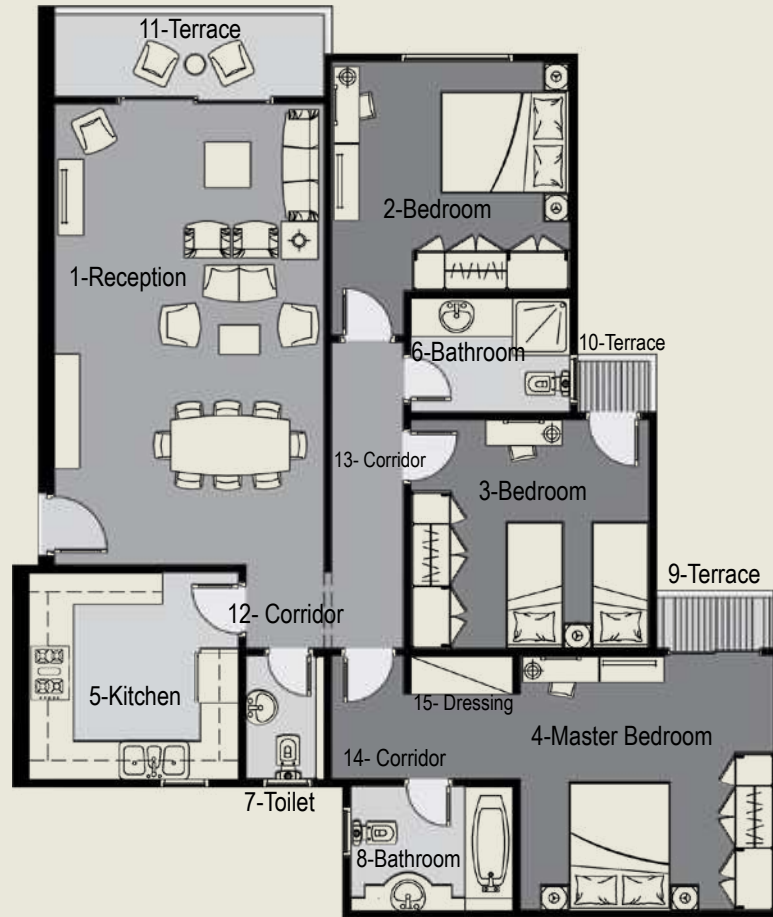
View

New Capital

عيش الحلم



TYPICAL - TYPE F



Dimensions	
1- Reception	8.1x4.6 m
2- Bedroom	4.1x3.85 m
3- Bedroom	3.75x3.72 m
4- Master Bedroom	4.1x4.25 m
5- Kitchen	3.7x3.5 m
6- Bathroom	2.5x1.95 m
7- Toilet	1.5x2.15 m
8- Bathroom	2.6x2 m
9- Terrace	1.32x0.95 m
10- Terrace	0.95x0.95 m
11-Terrace	3.4x1.45 m
12- Corridor	1.45x1.35 m
13- Corridor	5.35x1.4 m
14- Corridor	3.1x2.1 m
15- Dressing	2x0.75 m

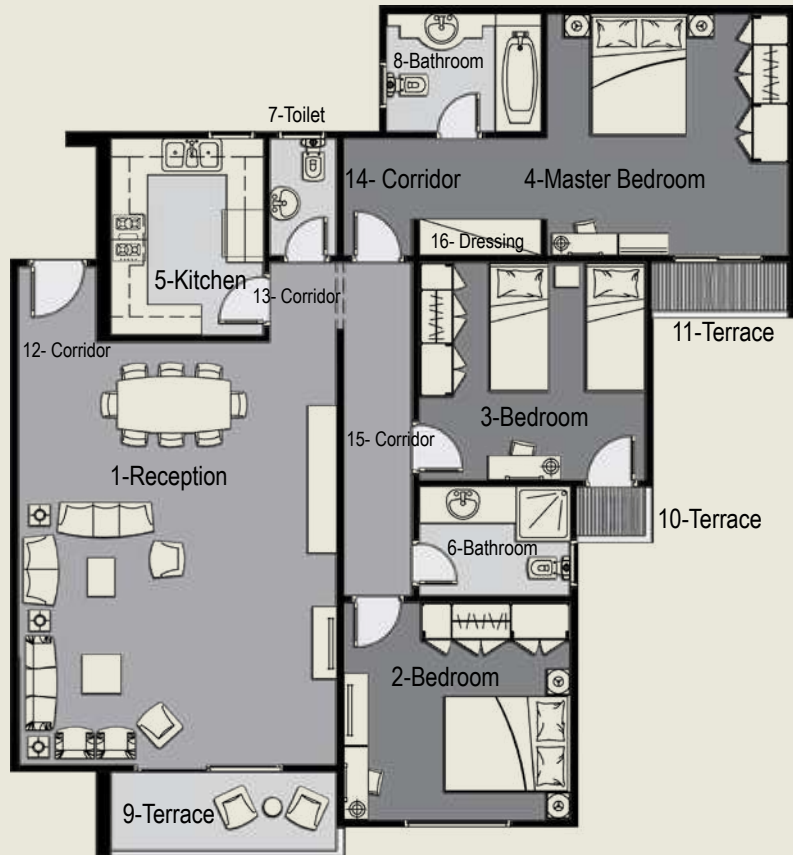
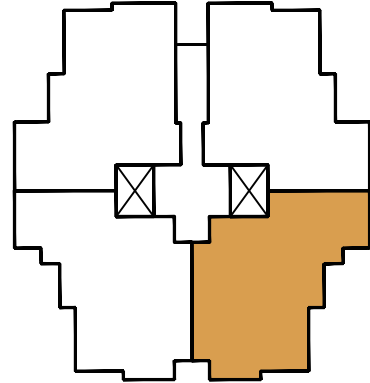
175 M²

175 M²




Sky Capital
View
 New Capital
 عيش الحلم

TYPICAL - TYPE C



Dimensions	
1- Reception	7.25x5.5 m
2- Bedroom	3.85x3.85 m
3- Bedroom	3.85x3.88 m
4- Master Bedroom	4.1x4.13 m
5- Kitchen	3.5x2.8 m
6- Bathroom	2.6x2.05 m
7- Toilet	1.35x2.15 m
8- Bathroom	2.6x2.20 m
9- Terrace	3.1x1.5 m
10- Terrace	1.00x1.25 m
11-Terrace	1.45x1 m
12- Corridor	1.40x1.25 m
13- Corridor	1.45x1.2 m
14- Corridor	2.15x3.5 m
15- Corridor	5.75x1.25 m
16- Dressing	2.15x0.75 m

180 M²

180 M²

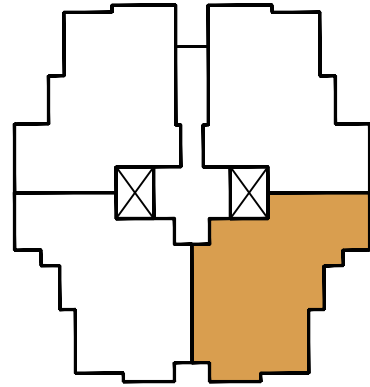
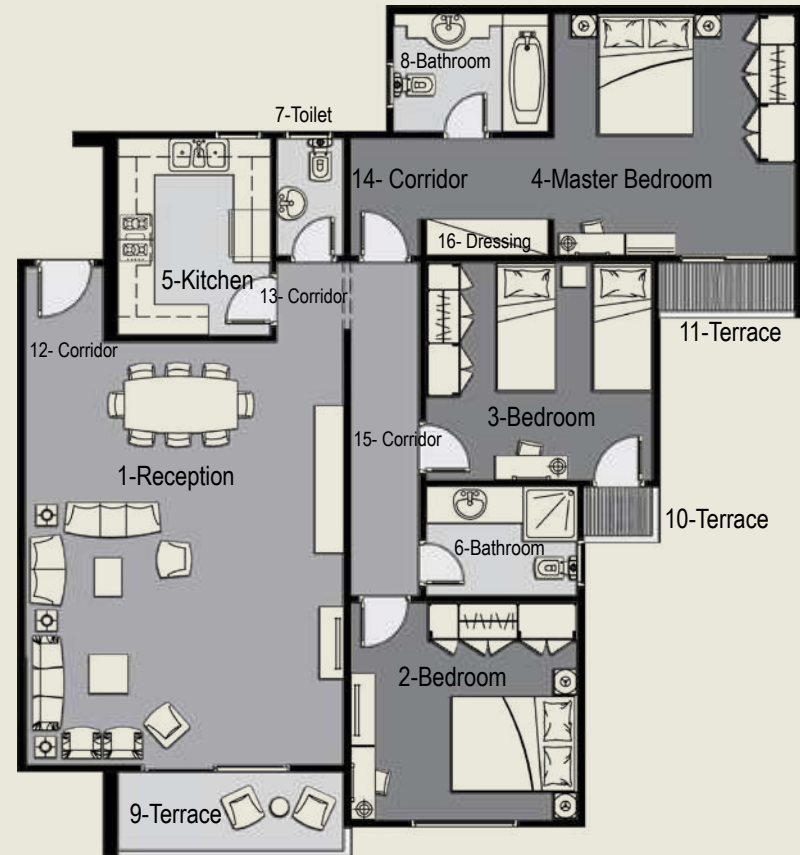


Sky Capital

View
New Capital

فرحة العائلة

TYPICAL - TYPE F



Dimensions	
1- Reception	8x5.5 m
2- Bedroom	4.1x3.85 m
3- Bedroom	3.85x3.88 m
4- Master Bedroom	4.25x4.1 m
5- Kitchen	3.5x2.9 m
6- Bathroom	2.6x2.05 m
7- Toilet	1.35x2.15 m
8- Bathroom	2.6x2.20 m
9- Terrace	3.4x1.55 m
10- Terrace	1.00x1.25 m
11-Terrace	1.45x1 m
12- Corridor	1.4x1.4 m
13- Corridor	1.45x1.2 m
14- Corridor	2.15x3.5 m
15- Corridor	5.75x1.25 m
16- Dressing	2.25x0.75 m

185 M²

185 M²

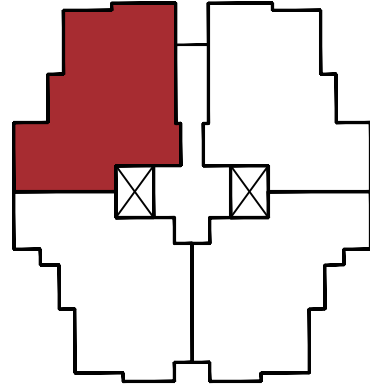
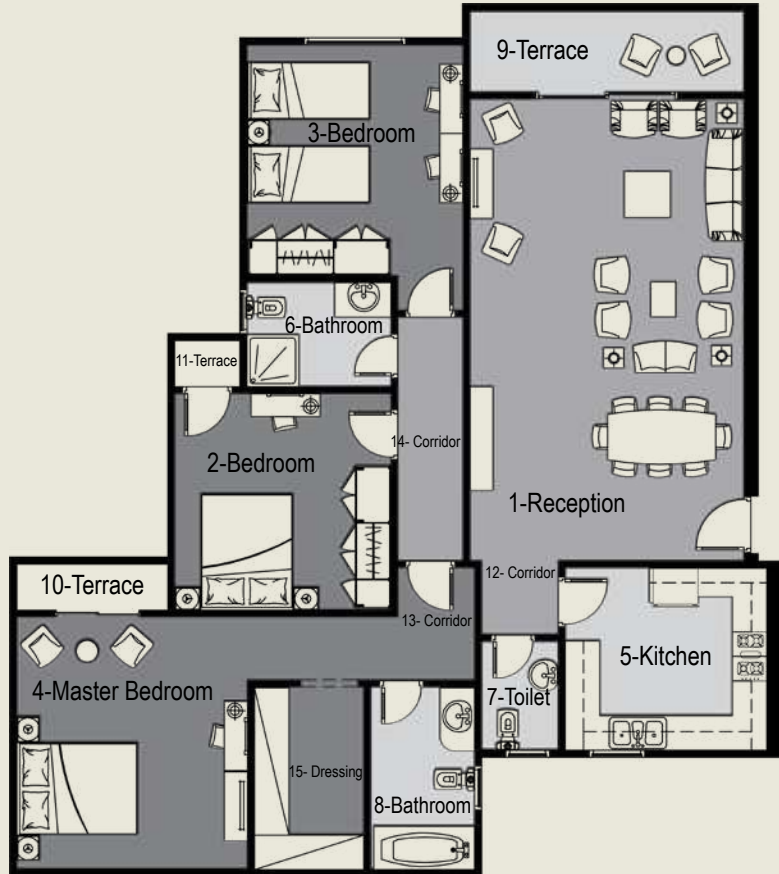


Sky Capital

View
New Capital

فرجة العائلة

TYPICAL - TYPE B



Dimensions	
1- Reception	7.95x4.95 m
2- Bedroom	4x3.90 m
3- Bedroom	4.1x3.9 m
4- Master Bedroom	4.35x4.1 m
5- Kitchen	3.8x3.15 m
6- Bathroom	2.65x1.95 m
7- Toilet	1.9x1.35 m
8- Bathroom	3.25x2 m
9- Terrace	3.45x1.45 m
10- Terrace	1.45x0.95 m
11- Terrace	1.05x0.95 m
12- Corridor	1.4x1.35 m
13- Corridor	4.25x1.3 m
14- Corridor	1.25x5.1 m
15- Dressing	2x3.25 m

200 M²

200 M²



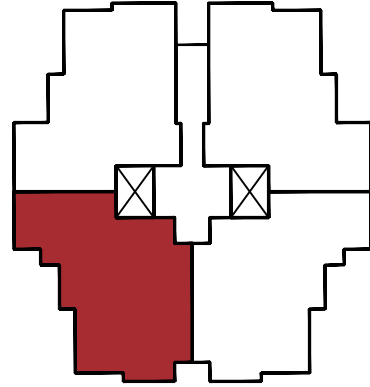
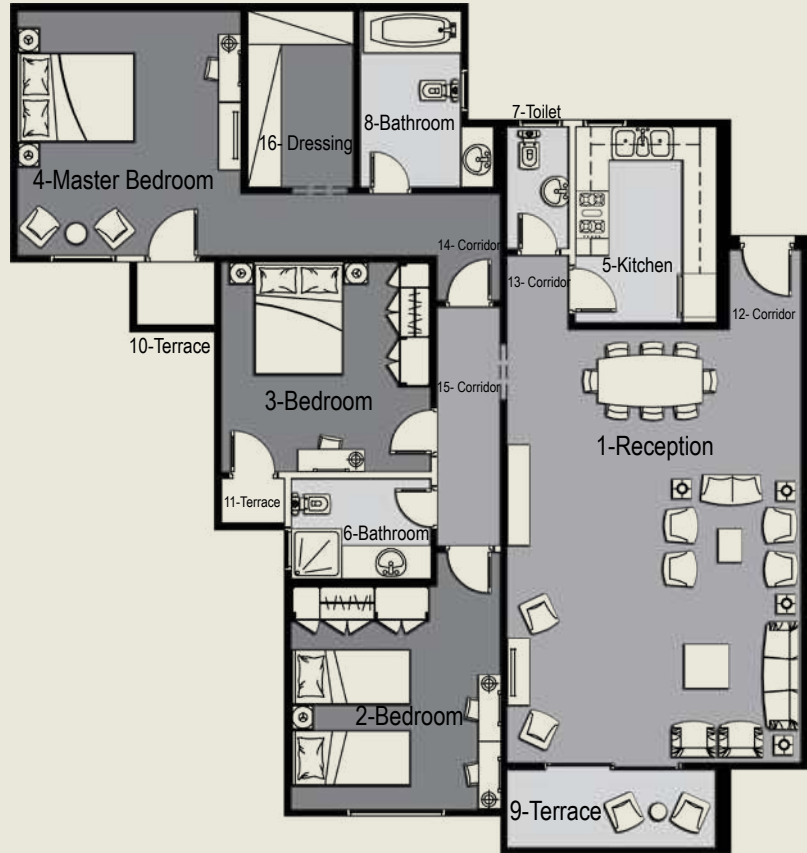
Sky Capital

View

New Capital

عيش السعادة

TYPICAL - TYPE B



Dimensions	
1- Reception	8.05x5.4 m
2- Bedroom	4x4 m
3- Bedroom	3.9x4 m
4- Master Bedroom	4.1x4.35 m
5- Kitchen	3.45x2.8 m
6- Bathroom	2.65x1.95 m
7- Toilet	2.2x1.65 m
8- Bathroom	2.05x3.15 m
9- Terrace	3.45x1.45 m
10- Terrace	1.45x0.95 m
11-Terrace	1.25x1 m
12- Corridor	1.45x1.45 m
13- Corridor	1.35x1.25 m
14- Corridor	1.25x4.8 m
15- Corridor	5.8x1.25 m
16- Dressing	3.15x2 m

205 M²

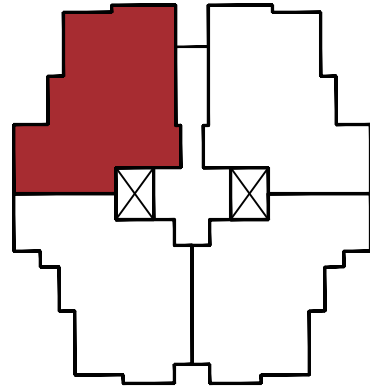
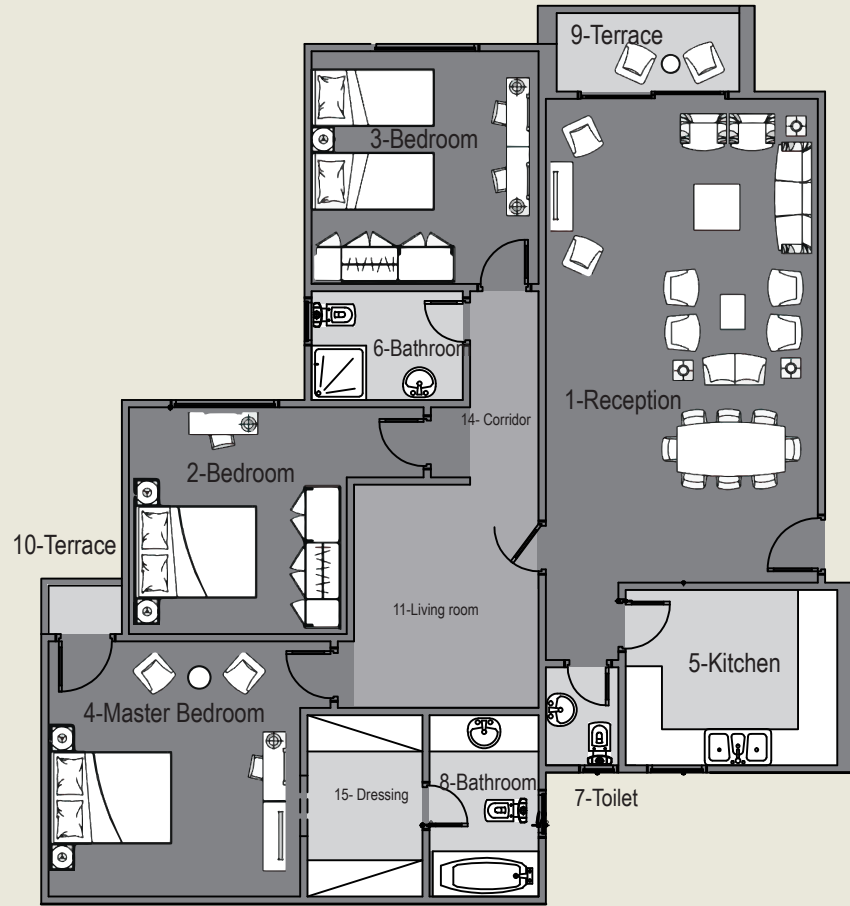
205 M²



Sky Capital
View
New Capital

جمال الطبيعة

TYPICAL - TYPE E



Dimensions	
1- Reception	8.25x4.75 m
2- Bedroom	3.75x3.75 m
3- Bedroom	4.1x4 m
4- Master Bedroom	4.5x4.4 m
5- Kitchen	3.9x3.15 m
6- Bathroom	2.05x2.75 m
7- Toilet	1.45x1.9 m
8- Bathroom	3.25x2.05 m
9- Terrace	3.6x1.55 m
10- Terrace	1.45x1.05 m
11- Living room	3.3x4 m
12- Corridor	1.45x1.4 m
13- Corridor	1.35x0.9 m
14- Corridor	3.3x1.4 m
15- Dressing	3.25x2.15 m

215 M²

215 M²



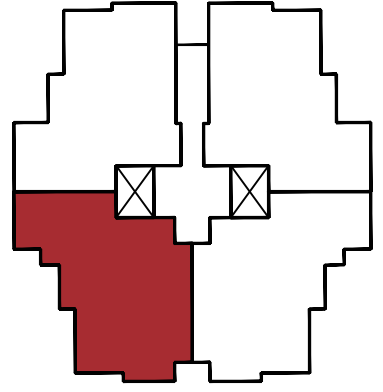
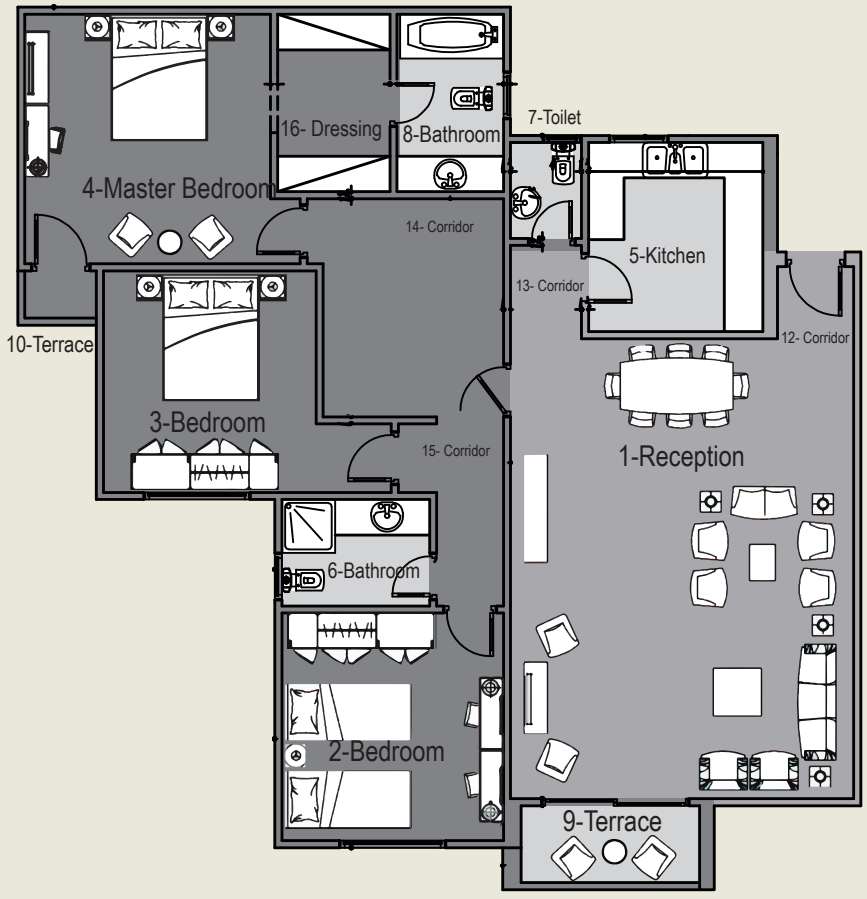
Sky Capital

View
New Capital

عيش السعادة



TYPICAL - TYPE E



Dimensions	
1- Reception	7.9x6.05 m
2- Bedroom	4.1x4 m
3- Bedroom	3.9x4 m
4- Master Bedroom	4.5x4.4 m
5- Kitchen	3.45x3.35 m
6- Bathroom	2.75x2.05 m
7- Toilet	1.45x1.9 m
8- Bathroom	3.25x2.05 m
9- Terrace	3.6x1.55 m
10- Terrace	1.45x1.05 m
11-Living room	3.3x4 m
12- Corridor	1.55x1.5 m
13- Corridor	1.7x1.45 m
14- Corridor	1.35x0.9 m
15- Corridor	3.35x1.25 m
16- Dressing	3.25x2.15 m

225 M²

225 M²



Sky Capital

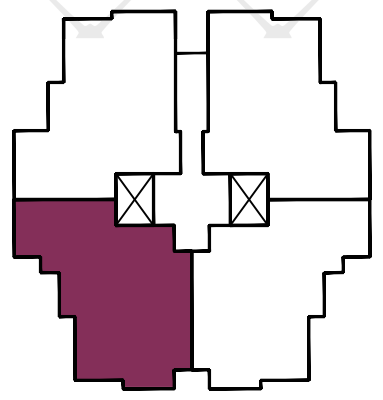
View
New Capital

جمال الطبيعة

DUPLEX - TYPE C



335 M²



Dimensions	
1- Reception	8.6x7.9 m
2- Kitchen	4.1x4.1 m
3- Bedroom	3.4x2.7 m
4- Bathroom	1.45x2.5 m
5- Toilet	2.2x2.05 m
6- Washing	1.4x2.05 m
7- Terrace	1.6x4.6 m
8- Stairs	2.25x3.6 m
9- Master Bedroom	4.25x4.8 m
10- Dressing room	3.7x2.2 m
11- Bathroom Master	2.25x3.15 m
12- Terrace Master	3.25x1.4 m
13- Master room lobby	2.7x2.05 m
14- Bathroom	2.3x2.6 m
15- Bedroom	5.45x4.85 m
16- Living room	5x3.75 m
17- Terrace Living	1.25x0.95 m
18- Kitchen	2x2.5 m
19- Bedroom	5x3.75 m

335 M²

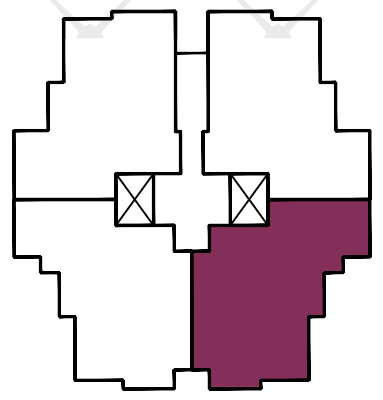
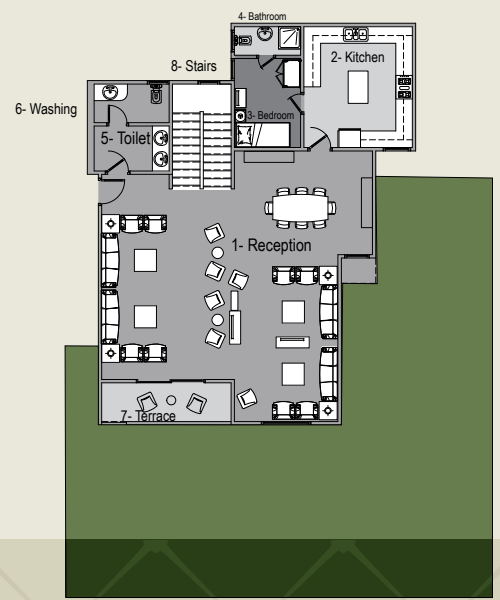
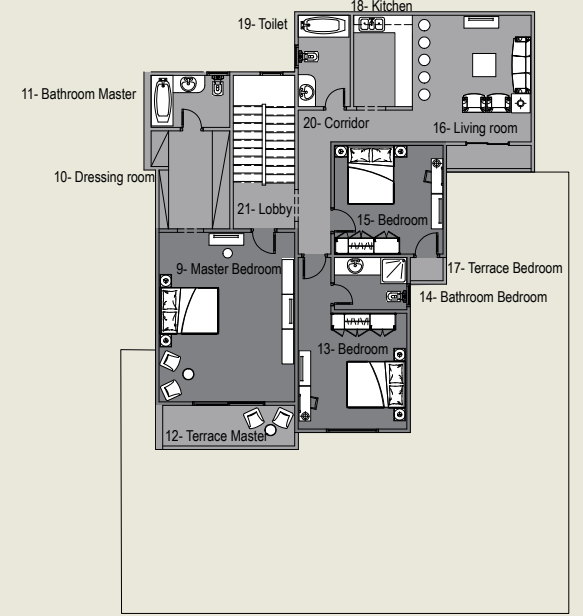


Sky Capital

View
New Capital
فرجة العائلة



DUPLEX - TYPE B



Dimensions	
1- Reception	9.8x8.5 m
2- Kitchen	4x4.35 m
3- Bedroom	3.2x3.25 m
4- Bathroom	1.3x2.5 m
5- Toilet	2.1x2.3m
6- Washing	1.75x2.3 m
7- Terrace	1.4x3.6 m
8- Stairs	3.8x2.85 m
9- Master Bedroom	5.6x4.85 m
10- Dressing room	3.3x4.25 m
11- Bathroom Master	3.3x2.1 m
12- Terrace Master	1.4x3.45 m
13- Bedroom	3.9x3.75 m
14- Bathroom Bedroom	2.7x2 m
15- Bedroom	4.2x4 m
16- Living room	4.3x4 m
17- Terrace Bedroom	1.4x0.95 m
18- Kitchen	2.15x3.2 m
19- Toilet	3.2x2 m
20- Corridor	1.25x4.8 m
21- Lobby	1.65x3.4 m

380 M²



Sky Capital

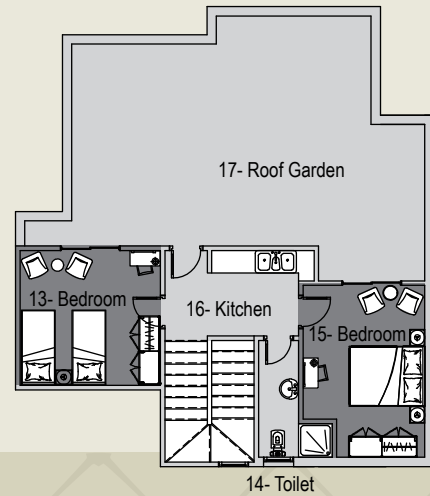
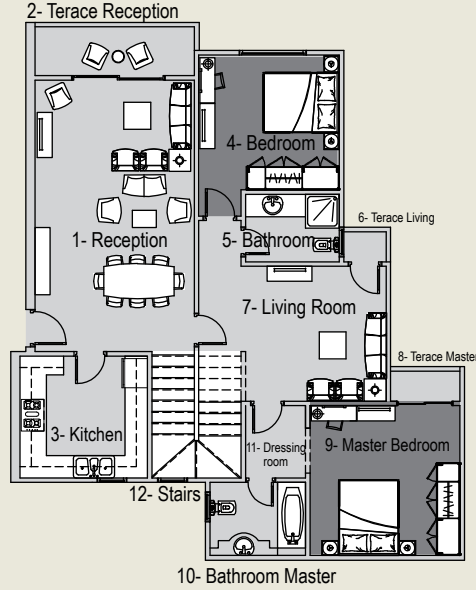
View

New Capital

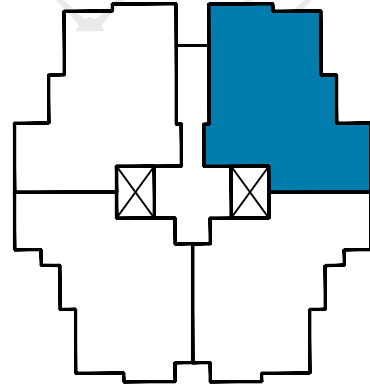
متعة الرفاهية

380 M²

BENT HOUSE C



245 M²



Dimensions	
1- Reception	7.25x4.5 m
2- Terrace Reception	1.35x3.25 m
3- Kitchen	3.4x3.6 m
4- Bedroom	3.75x3.75 m
5- Bathroom	2.5x2 m
6- Terrace Living	0.95x1.25 m
7- Living Room	5x3.75 m
8- Terrace Master	1.35x0.95 m
9- Master Bedroom	4.25x4 m
10- Bathroom Master	2.5x2 m
11- Dressing room	2.05x1.75 m
12- Stairs	3.5x3.5 m
13- Bedroom	3.75x3.45 m
14- Toilet	2.35x2.1 m
15- Bedroom	5.1x3.5 m
16- Kitchen	3.7x2.4 m
17- Roof Garden	62 m ²

245 M²

15136

15136

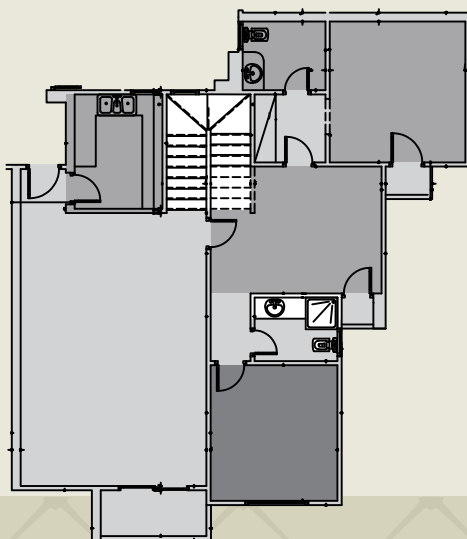
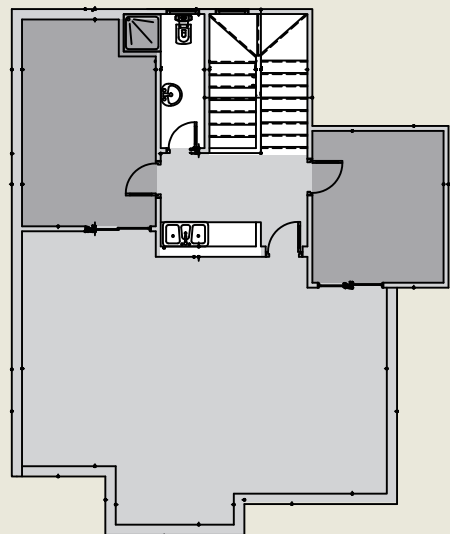


Sky Capital

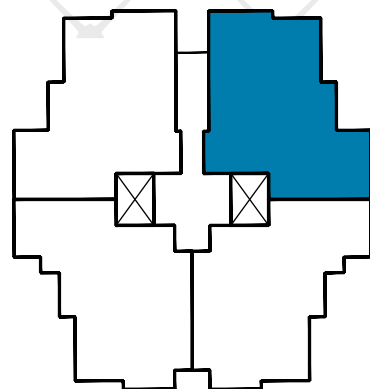
View
New Capital

متعة الرفاهية

BENT HOUSE F



260 M²



Dimensions	
1- Reception	
2- Terrace Reception	
3- Kitchen	
4- Bedroom	
5- Bathroom	
6- Terrace Living	
7- Living Room	
8- Terrace Bedroom	
9- Master Bedroom	
10- Bathroom Master	
11- Dressing room	
12- Stairs	
13- Living Room	
14- Bedroom	
15- Toilet	
16- Lobbe	
17- Bedroom	
18- Kitchen	
19- Roof Garden	

260 M²

15136

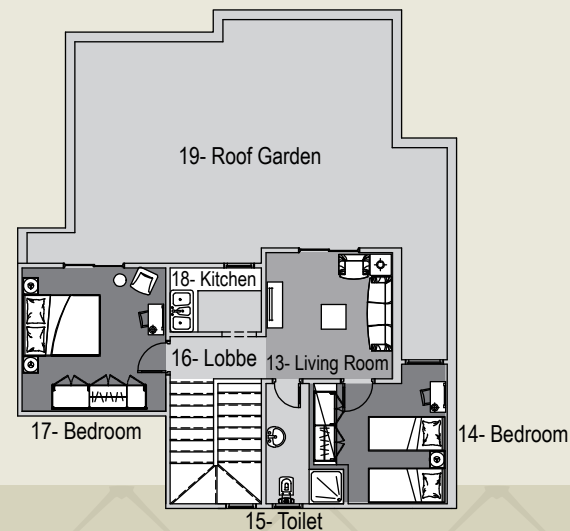
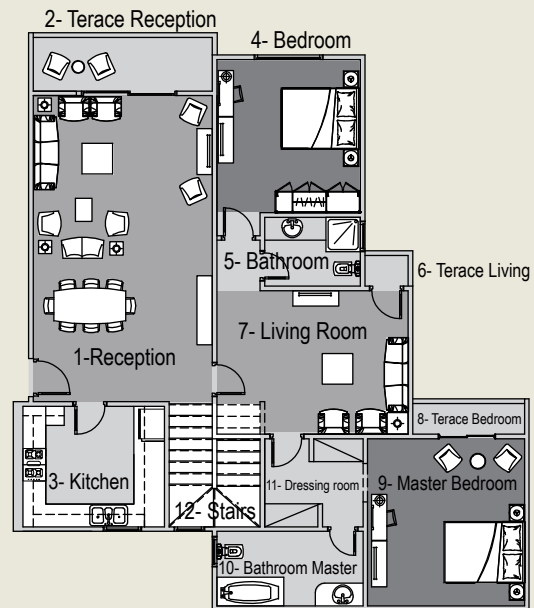


15136

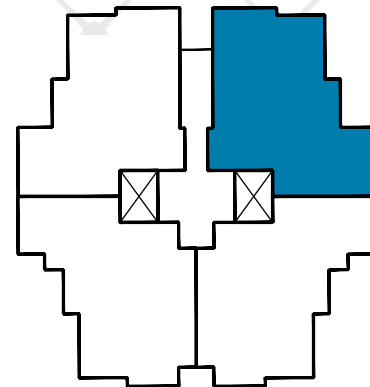


Sky Capital
New Capital

BENT HOUSE B



282 M²



Dimensions	
1- Reception	7.8x4.8 m
2- Terrace Reception	1.4x3.45 m
3- Kitchen	4x3.4 m
4- Bedroom	4x4 m
5- Bathroom	2.65x1.95 m
6- Terrace Living	1.05x1.25 m
7- Living Room	5.1x3.9 m
8- Terrace Bedroom	1.4x0.95 m
9- Master Bedroom	4.1x4.4 m
10- Bathroom Master	2.1x4 m
11- Dressing room	2.7x2.3 m
12- Stairs	3.4x2.6 m
13- Living Room	3.5x3 m
14- Bedroom	3.6x3.3 m
15- Toilet	1.25x2.15 m
16- Lobbe	1.25x2.5 m
17- Bedroom	4x4.1 m
18- Kitchen	1.8x2.5 m
19- Roof Garden	64 m ²

282 M²



سكاي
Sky Capital
View
 New Capital

متعة الرفاهية

FACILITIES



**Green Areas
& Community Garden**



**Kids Club
& Kids Area**



**Building
Access Card**



**Event
Lounge**



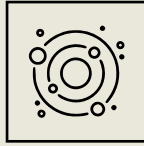
**Swimming
Pools**



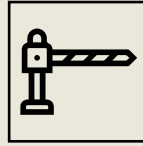
**Club
House**



**Golf
Cart**



**Solar
System**



**Residential
parking**



**Security
System**



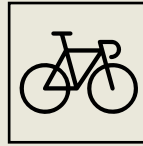
**Baby
Sitting Center**



**Central
Satellite & Wifi**



**Hyper
Market**



**Bicycle
Road**



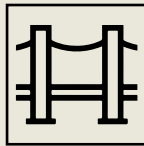
**House
Keeping**



**Business
Center**



**Premium
Mall**



Boulevard



**Beauty
Centers**



**Branded
Restaurants & Cafes**



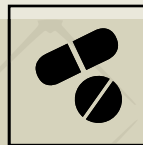
**Food
Court**



**Healthy
Club & Spa**



**Medical
Center**



Pharmacy 24/7



Atms